


# *JMPRESSIONISM*

Aaron Gaines


# Beginning of Impressionism

---

- Impressionism took the world by storm in 1874 when a group of artists called, Anonymous Society of Painters. These painters included Claude Monet, Edgar Degas, and Camille Pissarro. Although these painters all had different styles, they were still seen as a group. Many critics saw their work as being "incomplete" or "unfinished" due to its sketch like appearance. More progressive writers, however, saw it as a view on modern life.
- 

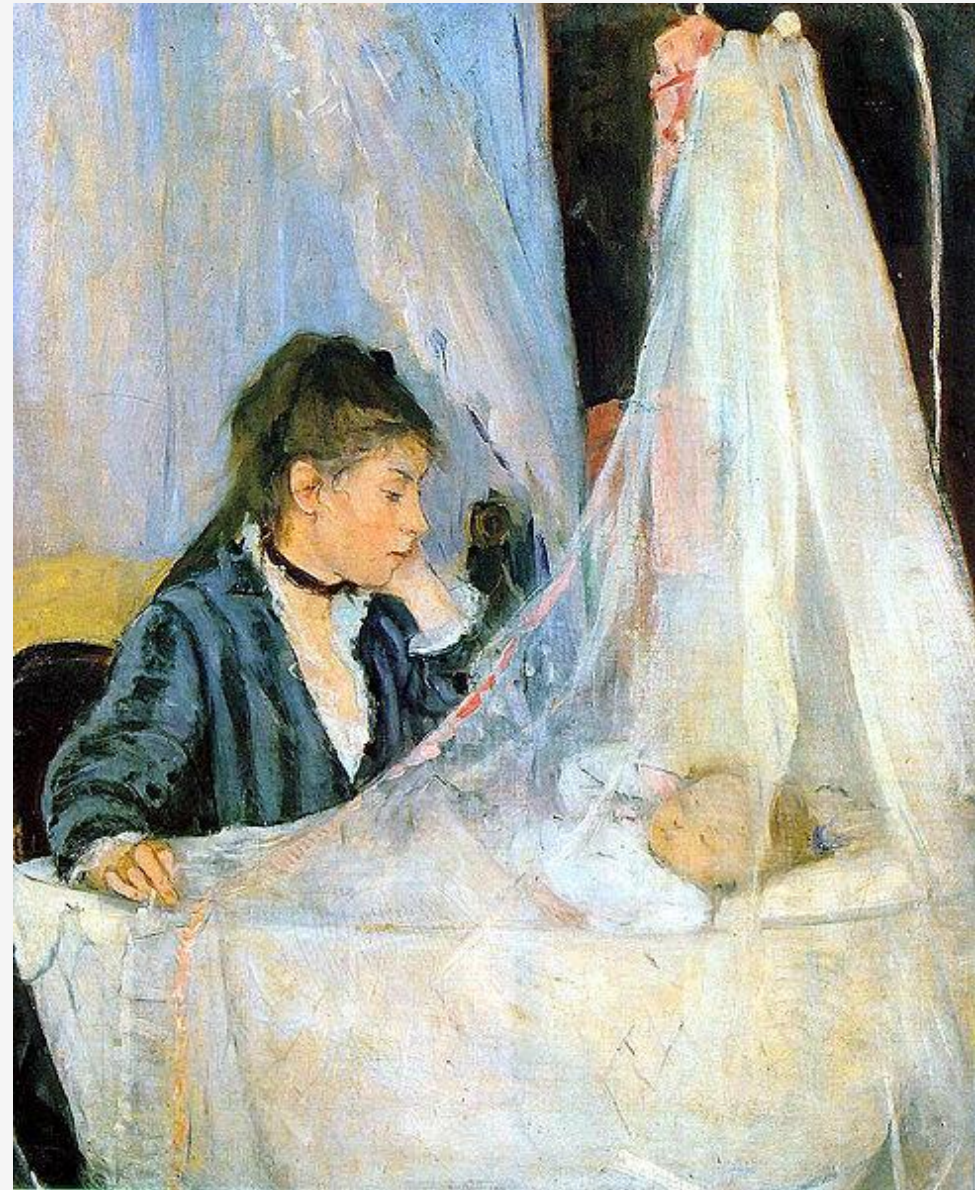
# Characteristics of Impressionism

---

- Short, thick strokes of paint that captures essence of a subject, as opposed to the exact details.
  - Colors are put side by side to create a vibrant visual.
  - Impressionistic works of art do not focus on the transparency of thin paint films, which artists before built up to produce effects.
  - Natural light is emphasized.
- 

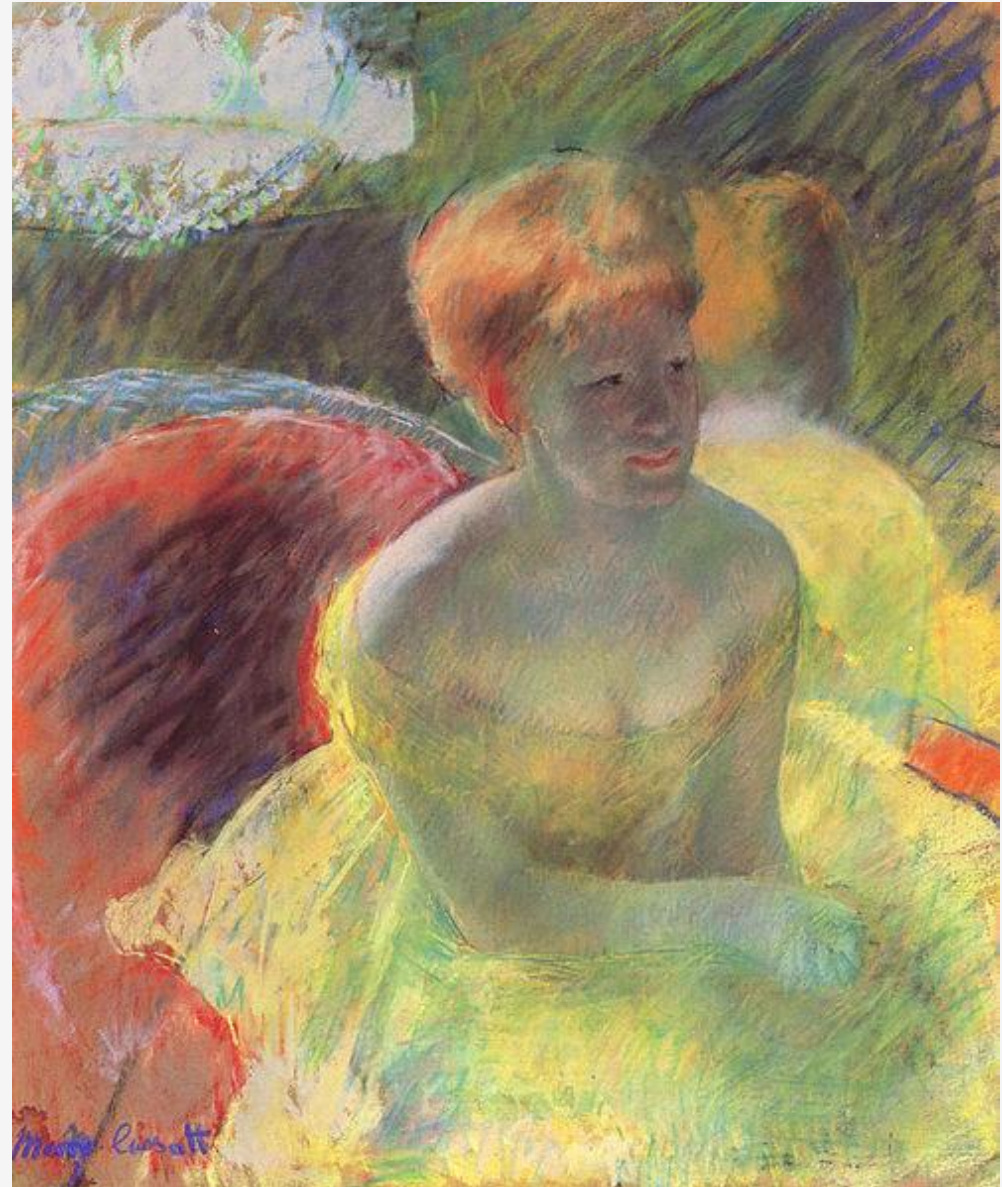
# Art Works

Berthe Morisot, *The Cradle*,  
1872, Musée d'Orsay



Mary Cassatt, *Lydia Leaning on Her Arms* (in a theatre box),  
1879

---



Alfred Sisley, *View of the Saint-Martin Canal, Paris, 1870*,  
Musée d'Orsay



# Music Work

Claude Debussy, *Voiles*, 1910.



# Impressionism in Theatre

As shown, the idea of this set design is to focus on the main points of what is needed (the doors), and not the exact details.

*Additional info is unavailable.*



# Ibsen's *Ghosts*

*Scenic & Lighting Design by R. Finkelstein* - Produced at The University of Colorado at Denver, College of Arts and Media at Denver's Acoma City Center Theatre. Production debut: October 6, 1999. The production is directed by Kathy Maes with costumes by Penny Cole.



# *Ghosts* cont.

*Scenic & Lighting Design by R. Finkelstein* - Produced at The University of Colorado at Denver, College of Arts and Media at Denver's Acoma City Center Theatre. Production debut: October 6, 1999.

The lighting choices focus on enhancing the pillars in the background, which are the dominant features on the stage, so that it would not draw attention to the scrim used. There are several spaces that were also left dark to bring attention to the isolation of characters.

---



# Bibliography

- SAMU, MARGARET. *METMUSEUM.ORG*, OCT. 2004,  
[WWW.METMUSEUM.ORG/TOAH/HD/IMML/HD\\_IMML.HTM](http://WWW.METMUSEUM.ORG/TOAH/HD/IMML/HD_IMML.HTM).
  - SOLOSKI, ALEXIS. “THEATRE REVIEW: IMPRESSIONISM / GERALD SCHOENFELD THEATRE, NEW YORK.” *THE GUARDIAN*, GUARDIAN NEWS AND MEDIA, 27 MAR. 2009,  
[WWW.THEGUARDIAN.COM/STAGE/2009/MAR/27/BROADWAY-REVIEW-IRONS-ALLEN-IMPRESSIONISM](http://WWW.THEGUARDIAN.COM/STAGE/2009/MAR/27/BROADWAY-REVIEW-IRONS-ALLEN-IMPRESSIONISM).
  - “STAGE DESIGNS OF RICHARD FINKELSTEIN.” *GHOSTS, BY IBSEN - SET DESIGN AND LIGHTING DESIGN BY RICHARD FINKELSTEIN, STAGE DESIGNER*, [WWW.RFDESIGNS.ORG/GHOSTS.HTM](http://WWW.RFDESIGNS.ORG/GHOSTS.HTM)
  - TARANTINO, TODD. *CLAUDE DEBUSSY: VOILES*,  
[WWW.TODDTARANTINO.COM/HUM/DEBUSSY\\_VOILES.HTML](http://WWW.TODDTARANTINO.COM/HUM/DEBUSSY_VOILES.HTML).
-